

CleanCase



The CleanCase includes a selection of CleanStars and CleanJets



CleanStar



CleanJet

CleanStar

Description of function

The CleanStar enables your CNC-machine to self-clean, thus saving you in many cases an expensive mechanism for washing up machine base.

Cooling lubricant or oil is directed through the spindle as a medium for removing chips. The way this tool operates ensures that the chips does not swirl around randomly in the chip-forming space, but is instead washed away precisely into the chip conveyor.

The rotation and the resulting repeated impact with the medium result in an excellent cleaning effect for pallets, large components especially workpieces and machine interiors.

Universally applicable

The area to be cleaned can be adjusted by means of jets that can be opened individually. Adaptation to the quantity of fluid passing through the machine spindle is effected in the same way. The side-mounted CleanStar boasts a cleaning range far in excess of 360° and even cleans the spindle nose.

The CleanStar-control additionally allows to check the condition of the pump, filter and the whole supply line in a matter of seconds.

Advantages by utilization of this tool

- Faster than manual cleaning
- No effort required on the part of the user
- Protects the machine guideways
- Reduced cleaning and ancillary expenses
- Lifetime > 5 years
- No risk of injury from swarf and chips

Technical data

Working range	up to 360°
Pressure range	5 to 120 bar
Number of jets	13 - 15
Minimum rotational speed	5 rpm
Maximum rotational speed	100 rpm
Working medium	Fluids

CleanJet

Description of function

The CleanJet gives your CNC-milling-machine the ability automatically to clean its components, mounting clamps and machining table using cooling lubricant or pressurised air.

A tool that is indispensable for the automation of machine tools. The spindle rotations and movements make this tool a flexible and effective aid in chip removal processes.

The use of cooling lubricant instead of pressurised air lowers operating costs and reduces noise levels.

Flexible range of uses

The modular construction of the CleanJet allows for a wide variety of tool combinations. All cleaning tools may additionally be mounted in 16 mm boreholes.

The cleaning tool may be adapted to specific conditions for optimal effectiveness using a rotating tool applied from different specific positions. The CleanJet has a rapid-motion cleaning action and may easily be integrated into automated processes by means of a short sub-program.

Advantages of this tool

- Faster than manual cleaning
- No effort required on the part of the operator
- No risk of injury from swarf and chips
- Reduced manufacturing costs
- Lifetime >5 years

Technical data

Working range with UD	up to 360°
Pressure range Fluid	5 to 120 bar
Pressure range Gas	5 to 10 bar
Minimum rotational speed	30 rpm
Maximum rotational speed	400 rpm
Working medium	Fluids and pressurised air

Ordersystem Automatic - Cleaning - Tools

Order-Example for a filled CleanCase:

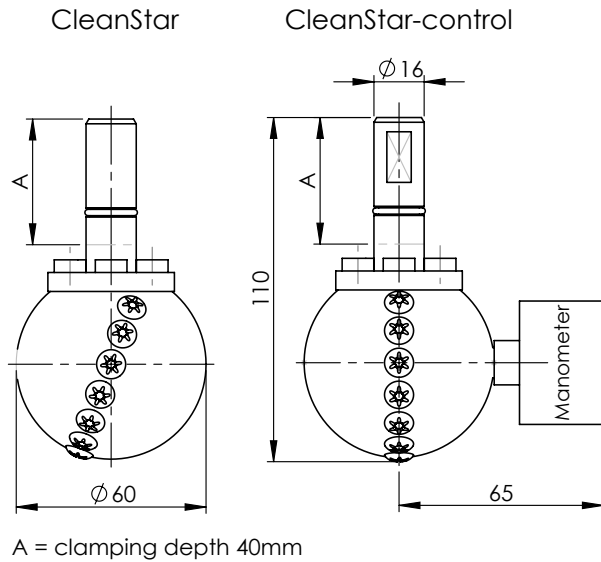
ARW-CS-UV, -CS-UH-50-C, -CJ30-UD40, -CJ100-UD45, -CJ180-UD50, -CC, -K

Detail	Description	Code	Example
Tool Type	Cleaning tool	ACT	ACT
Series	CleanStar with circular arranged nozzles CleanStar with nozzles arranged for H and V spindle CleanStar-control, with circular nozzles and manometer CleanStar-control, with H and V nozzles and manometer CleanStar CS-UV but with short side connection CleanStar CS-UV but with long side connection CleanStar CS-UV with short side connection and manometer CleanStar CS-UV with long side connection and manometer	CS-UV CS-HV CS-UV-C CS-HV-C CS-UH-50 CS-UH-120 CS-UH-50-C CS-UH-120-C	CS-UV CS-UH-50-C
Series	CleanJet tube with 30 mm throat and nozzle UD40 CleanJet tube with 30 mm throat and nozzle UD45 CleanJet tube with 30 mm throat and nozzle UD50 CleanJet tube with 100 mm throat and nozzle UD40 CleanJet tube with 100 mm throat and nozzle UD45 CleanJet tube with 100 mm throat and nozzle UD50 CleanJet tube with 180 mm throat and nozzle UD40 CleanJet tube with 180 mm throat and nozzle UD45 CleanJet tube with 180 mm throat and nozzle UD50 CleanJet tube with 250 mm throat and nozzle UD40 CleanJet tube with 250 mm throat and nozzle UD45 CleanJet tube with 250 mm throat and nozzle UD50 Additional CleanJets e.g. with ø8 mm available on request	CJ30-UD40 CJ30-UD45 CJ30-UD50 CJ100-UD40 CJ100-UD45 CJ100-UD50 CJ180-UD40 CJ180-UD45 CJ180-UD50 CJ250-UD40 CJ250-UD45 CJ250-UD50	CJ30-UD40 CJ100-UD45 CJ180-UD50
Accessories	CleanCase Tube extension 30 Tube extension 100 Tube extension coupling Ball joint for cleaning range extension Special nozzle UD55 - for large machines Radial-nozzles RD40, RD45, RD50	CC V30 V100 K KG UD55 RD40, -45, -50	CC K

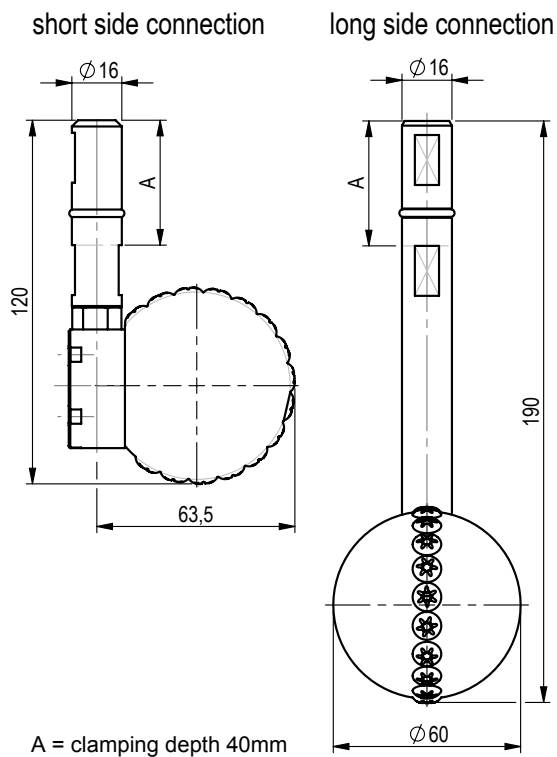
Optional: The following tool holding fixtures are available for ACT:

Tool fixtures	Tool fixtures with 16 mm or 5/8" bore for insertion CleanStar or CleanJet	SK30, SK40, SK50 BT30, BT40, BT50 HSK50, HSK63, HSK100 KM40 - KM80 Capto C5, C6 VDI 16 - VDI50	SK40
---------------	---	---	------

Dimensional drawing CleanStar



Dimensional drawing CleanStar with side connection



Dimensional drawing CleanJet family

